

# **Computer System and File Backups**

## **Review of Norton Ghost 10.0**

**By Ron Mettler, January 13, 2007**

### Ghost 10 Overview

Norton Ghost provides advanced backup and recovery routines for computer hard drives. Automatic backups from one hard drive to a second hard drive can be scheduled for any interval such as daily, weekly or a one time immediate backup. Recovery of files, folders, or the entire hard drive can be accomplished. An active bootable hard drive can be copied to a new hard drive enabling the new hard drive to be a bootable replacement drive. A failed hard drive can be replaced with a new hard drive and then recovered using the backup hard drive to transfer the entire system to the new hard drive.

### Ghost 10 Details

- Easy to use backup setups
- Backup on a recurring basis such as a nightly routine
- Create a complete system backup once a month
- Perform an incremental backup (recovery point) of changed or new files each night
- Each night then becomes a recovery point such that individual files, folders or the entire hard drive can be recovered to the state that existed at that point of time.
- Recovery points can be encrypted and passwords assigned to secure the backup information.
- Ghost is integrated to work automatically with Maxtor OneTouch drives. A push of a button on the Maxtor drive will backup the entire C drive to the Maxtor drive.

### Ghost 10 Brief Setup Procedure for Creating Recurring Backups

Install Ghost from the install CD

Run the easy setup for the first backup

- Specify certain settings
- Specify a name for the recurring backups such as "Backup of C Drive"
- Choose when to run the backups. Set the time when the computer will be inactive such as at 2:00 AM nightly.
- Choose the destination for the backup files. It is recommended that a second drive be used for the backups. The advantage of using a second drive for the backup files is that a failure of the first drive will leave the backup drive in tack and usable for file recovery. The backup drive can be an internal second physical drive, and external USB or Firewire drive or a Ethernet network drive connected to a router.
- Choose how often a new backup set is started which will be a complete system backup. A monthly interval may be appropriate.

## Ghost 10 Recovery Procedures

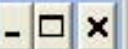
- Individual files or folders can be recovered from any recovery point in time.
- The entire hard drive can be recovered from a recovery point. Very useful when an unrecoverable error occurs which causes Windows to not boot. Just insert the original Ghost 10 CD, select Recover My Computer, then select the recovery point time, and the hard drive will be returned to the state it was in at that point in time.
- Create a new bootable hard drive from the backup using any recovery point. Install a new hard drive to replace an existing C hard drive and use “Recover My Computer” to create a new bootable hard drive. A third hard drive could be installed in a system and setup as a bootable drive. In that case Norton Ghost would be run from the C drive, a recovery point specified from the backup drive, and the new drive created as a bootable drive. The new bootable drive would then be used to replace the original C drive.
- Note that Norton Ghost must be activated in order to use complete hard drive recovery routines.

Once installed Norton Ghost is active in the task bar  
Double click the icon to bring up the options






# Edit Backup Schedules



File Tasks View Help

Select a schedule from the list, and click Edit Schedule.

Name	Schedule	Drives	Next Run	Event Triggers
 Complete System Backup	At 11:58 PM MST on the specified days of t...	Mettler (F:\); Mettler (C:\)	Today 11:58 PM	No

Edit Schedule...

Ready

**Edit Schedule - Complete System Backup**

Enable backup

Scheduling | Event Triggers

Schedule recovery point creation

Sun	Mon	Tue	Wed	Thu	Fri	Sat
<input checked="" type="checkbox"/>	<input checked="" type="checkbox"/>	<input checked="" type="checkbox"/>	<input checked="" type="checkbox"/>	<input checked="" type="checkbox"/>	<input checked="" type="checkbox"/>	<input checked="" type="checkbox"/>

Start time: 11:58 PM

Create more than one recovery point per day

Hours between recovery points: 1

Recovery points created per day: 2

Automatically optimize: Never

Start a new recovery point set

Monthly (recommended)

OK

Cancel



## Welcome to the Define Backup Wizard

This wizard helps you protect your data, OS, programs, and settings by scheduling regular backups of your drives.

A recovery point is a copy of your drive that can be stored on a network, removable media, or a folder on your computer. Recovery points are created with no downtime.

If you lose data, you can restore files, folders, or the entire drive from the recovery points.

To continue, click Next.

<< Back

Next >>

Cancel

**Define Backup Wizard**

**Drives**

Select the drives to include in the recovery points.



Select a drive, or press <Ctrl> and select multiple drives:

Drive	Size	Used	Last Recovery Point
Mettler (C:\)	61914 MB	36916 MB	1/8/2007 4:45:46 PM
Mettler (F:\)	52556 MB	26777 MB	1/8/2007 4:45:46 PM
Backup (G:\)	286181 MB	213708 MB	


Used space:	38,597,083,136 bytes	36.0 GB	
Free space:	26,325,016,576 bytes	24.5 GB	
Capacity:	64,922,099,712 bytes	60.5 GB	

<< Back    Next >>    Cancel



**Define Backup Wizard** [X]

**Location**  
You can specify where created recovery points will be saved.



Folder for recovery point storage:  
F:\Images [Browse...]

Filename	Source Drive
RONDESKTOP_C_Drive	Mettler (C:\)

[Rename]

Network Credentials


User name: [ ] [?]

Password: [ ]

<< Back   Next >>   Cancel

**Define Backup Wizard** [X]

**Options**  
You can specify the recovery point options below.



Name:

Compression:

Verify recovery point after creation

Limit the number of recovery point sets saved for each drive

Maximum:

Description (included in each recovery point):

### Schedule Automatic Recovery Point Creation

You can specify when this backup creates a new recovery point.



How do you want to create new recovery points?

- Manually (no schedule)
- Scheduled

Define Custom Schedule...

#### Summary - Recovery points will be created

At 5:15 PM MST on Sunday of every week, starting 1/8/2007.

<< Back

Next >>

Cancel

**Edit Schedule - Recovery point of C:\**

Enable backup

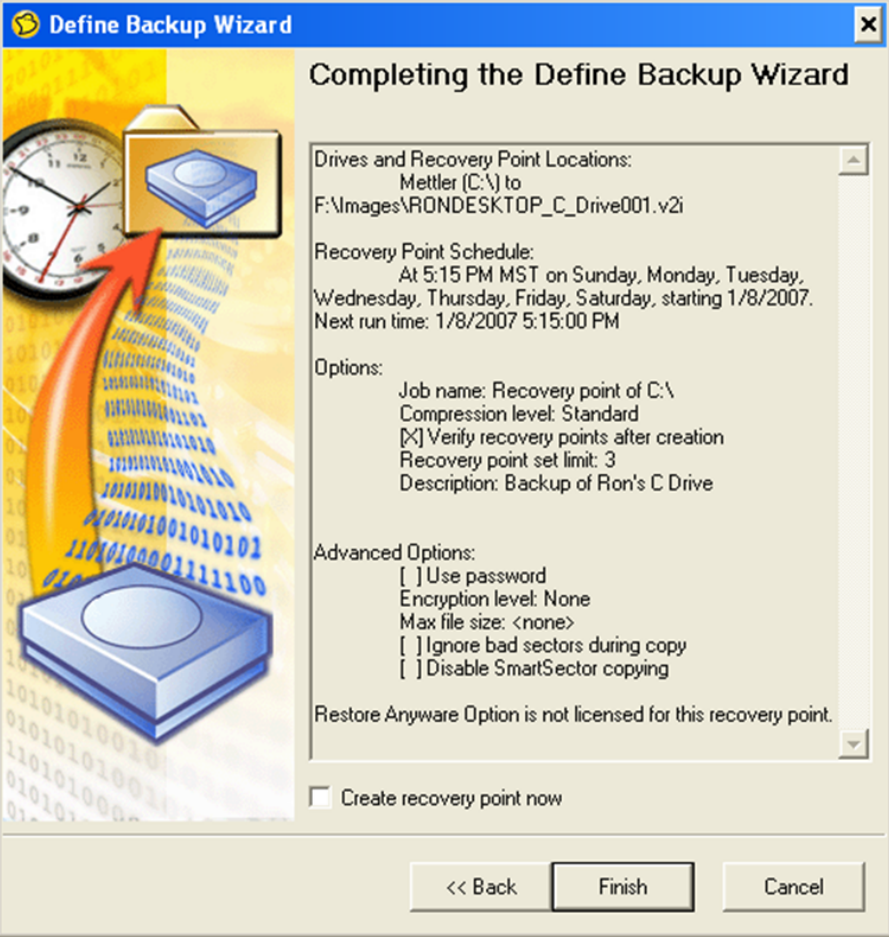
Automatically create a recovery point

Weekly  
 Monthly  
 Only run once  
 Manually (no schedule)

Select days of the week to protect

Sun	Mon	Tue	Wed	Thu	Fri	Sat
<input checked="" type="checkbox"/>	<input checked="" type="checkbox"/>	<input checked="" type="checkbox"/>	<input checked="" type="checkbox"/>	<input checked="" type="checkbox"/>	<input checked="" type="checkbox"/>	<input checked="" type="checkbox"/>

Start time:



## Copy Drive Wizard

### Welcome to the Copy Drive Wizard

This wizard lets you copy the contents of your drive directly to another location. This feature is useful when upgrading to a larger hard drive.

Unlike the Create Recovery Point wizard, Copy Drives does not create a recovery point file. Instead, it duplicates your drive directly to another drive.

This wizard cannot be used to copy to a network drive or removable media.

To continue, click Next.

<< Back

Next >>

Cancel

## Copy Drive Wizard

### Select Destination

You can select the destination for the copy.



Select a destination, or press <Ctrl> and select multiple destinations:

Destination	Disk	File System	Size	Type
Mettler (C:\)	1	NTFS	61914 MB	Primary
Mettler (F:\)	1	NTFS	52556 MB	Logical
Backup (G:\)	2	NTFS	286181 MB	Primary

If there is not sufficient space to copy the drive, you can use <Ctrl> and select multiple destinations.

<< Back

Next >>

Cancel

## Copy Drive Wizard

### Options


Specify the copy options.



- Check source for file system errors
- Check destination for file system errors
- Resize drive to fill unallocated space
- Set drive active (for booting OS)
- Disable SmartSector copying
- Ignore bad sectors during copy

#### Destination partition type:

- Primary partition
- Logical partition

Drive letter:  

For advanced configurations (see documentation):

- Copy MBR

<< Back

Next >>

Cancel



## Copy Drive Wizard

### Completing the Copy Drive Wizard

Source drive to copy: Mettler (C:\)

Destination:  
Backup (G:\)

Options:

- Check source for file system errors
- Check destination for file system errors
- Resize drive to fill unallocated space
- Set drive active
- Disable SmartSector copying
- Ignore bad sectors during copy

Destination partition type: Primary  
New drive letter: G:

Advanced options:  
 Copy MBR

Click Finish to begin the operation.

<< Back

Finish

Cancel

**Recover My Computer**

File Tasks View Help

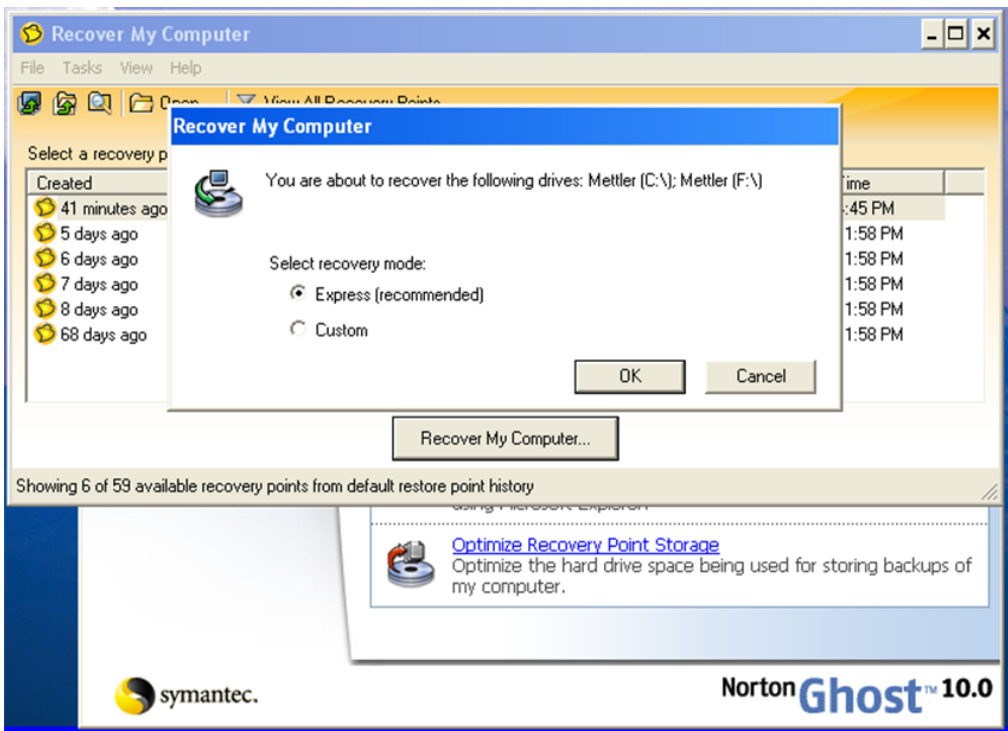
Open View All Recovery Points

Select a recovery point from the list, and then click Recover My Computer.

Created	Contents	Date	Time
34 minutes ago	Mettler (C:\); Mettler (F:\)	1/8/2007	4:45 PM
5 days ago	Mettler (C:\); Mettler (F:\)	1/3/2007	11:58 PM
6 days ago	Mettler (C:\); Mettler (F:\)	1/2/2007	11:58 PM
7 days ago	Mettler (C:\); Mettler (F:\)	1/1/2007	11:58 PM
8 days ago	Mettler (C:\); Mettler (F:\)	12/31/2006	11:58 PM
9 days ago	Mettler (C:\); Mettler (F:\)	12/30/2006	11:58 PM
10 days ago	Mettler (C:\); Mettler (F:\)	12/29/2006	11:58 PM
11 days ago	Mettler (C:\); Mettler (F:\)	12/28/2006	11:58 PM
12 days ago	Mettler (C:\); Mettler (F:\)	12/27/2006	11:58 PM
13 days ago	Mettler (C:\); Mettler (F:\)	12/26/2006	11:58 PM
14 days ago	Mettler (C:\); Mettler (F:\)	12/25/2006	11:58 PM
15 days ago	Mettler (C:\); Mettler (F:\)	12/24/2006	11:58 PM
16 days ago	Mettler (C:\); Mettler (F:\)	12/23/2006	11:58 PM
17 days ago	Mettler (C:\); Mettler (F:\)	12/22/2006	11:58 PM
18 days ago	Mettler (C:\); Mettler (F:\)	12/21/2006	11:58 PM
19 days ago	Mettler (C:\); Mettler (F:\)	12/20/2006	11:59 PM
20 days ago	Mettler (C:\); Mettler (F:\)	12/19/2006	11:58 PM
21 days ago	Mettler (C:\); Mettler (F:\)	12/18/2006	11:58 PM
22 days ago	Mettler (C:\); Mettler (F:\)	12/17/2006	11:58 PM
23 days ago	Mettler (C:\); Mettler (F:\)	12/16/2006	11:58 PM
24 days ago	Mettler (C:\); Mettler (F:\)	12/15/2006	11:58 PM
25 days ago	Mettler (C:\); Mettler (F:\)	12/14/2006	11:58 PM
26 days ago	Mettler (C:\); Mettler (F:\)	12/13/2006	11:58 PM
27 days ago	Mettler (C:\); Mettler (F:\)	12/12/2006	11:58 PM
28 days ago	Mettler (C:\); Mettler (F:\)	12/11/2006	11:59 PM
29 days ago	Mettler (C:\); Mettler (F:\)	12/10/2006	11:58 PM
30 days ago	Mettler (C:\); Mettler (F:\)	12/9/2006	11:58 PM
31 days ago	Mettler (C:\); Mettler (F:\)	12/8/2006	11:58 PM
31 days ago	Mettler (C:\); Mettler (F:\)	12/8/2006	2:07 AM
33 days ago	Mettler (C:\); Mettler (F:\)	12/6/2006	11:58 PM
34 days ago	Mettler (C:\); Mettler (F:\)	12/5/2006	11:58 PM
35 days ago	Mettler (C:\); Mettler (F:\)	12/4/2006	11:58 PM
36 days ago	Mettler (C:\); Mettler (F:\)	12/3/2006	11:58 PM
37 days ago	Mettler (C:\); Mettler (F:\)	12/2/2006	11:58 PM
38 days ago	Mettler (C:\); Mettler (F:\)	12/1/2006	11:58 PM
39 days ago	Mettler (C:\); Mettler (F:\)	11/30/2006	11:58 PM
40 days ago	Mettler (C:\); Mettler (F:\)	11/29/2006	11:59 PM
41 days ago	Mettler (C:\); Mettler (F:\)	11/28/2006	11:59 PM
42 days ago	Mettler (C:\); Mettler (F:\)	11/27/2006	11:58 PM
43 days ago	Mettler (C:\); Mettler (F:\)	11/26/2006	11:58 PM
44 days ago	Mettler (C:\); Mettler (F:\)	11/25/2006	11:58 PM
44 days ago	Mettler (C:\); Mettler (F:\)	11/25/2006	2:46 AM

Recover My Computer...

Showing 95 of 95 available recovery points from default restore point history



**Recover My Files** [Window Title Bar]

File Tasks View Help

Open View All Recovery Points

Select a recovery point from the list, and then click Browse Contents.

Created	Contents	Date	Time
43 minutes ago	Mettler (C:\); Mettler (F:\)	1/8/2007	4:45 PM
5 days ago	Mettler (C:\); Mettler (F:\)	1/3/2007	11:58 PM
6 days ago	Mettler (C:\); Mettler (F:\)	1/2/2007	11:58 PM
7 days ago	Mettler (C:\); Mettler (F:\)	1/1/2007	11:58 PM
8 days ago	Mettler (C:\); Mettler (F:\)	12/31/2006	11:58 PM
9 days ago	Mettler (C:\); Mettler (F:\)	12/30/2006	11:58 PM
10 days ago	Mettler (C:\); Mettler (F:\)	12/29/2006	11:58 PM
11 days ago	Mettler (C:\); Mettler (F:\)	12/28/2006	11:58 PM
12 days ago	Mettler (C:\); Mettler (F:\)	12/27/2006	11:58 PM
13 days ago	Mettler (C:\); Mettler (F:\)	12/26/2006	11:58 PM
14 days ago	Mettler (C:\); Mettler (F:\)	12/25/2006	11:58 PM
15 days ago	Mettler (C:\); Mettler (F:\)	12/24/2006	11:58 PM
16 days ago	Mettler (C:\); Mettler (F:\)	12/23/2006	11:58 PM
17 days ago	Mettler (C:\); Mettler (F:\)	12/22/2006	11:58 PM
18 days ago	Mettler (C:\); Mettler (F:\)	12/21/2006	11:58 PM
19 days ago	Mettler (C:\); Mettler (F:\)	12/20/2006	11:59 PM
20 days ago	Mettler (C:\); Mettler (F:\)	12/19/2006	11:58 PM
21 days ago	Mettler (C:\); Mettler (F:\)	12/18/2006	11:58 PM
22 days ago	Mettler (C:\); Mettler (F:\)	12/17/2006	11:58 PM
23 days ago	Mettler (C:\); Mettler (F:\)	12/16/2006	11:58 PM
24 days ago	Mettler (C:\); Mettler (F:\)	12/15/2006	11:58 PM
25 days ago	Mettler (C:\); Mettler (F:\)	12/14/2006	11:58 PM
26 days ago	Mettler (C:\); Mettler (F:\)	12/13/2006	11:58 PM
27 days ago	Mettler (C:\); Mettler (F:\)	12/12/2006	11:58 PM
28 days ago	Mettler (C:\); Mettler (F:\)	12/11/2006	11:59 PM
29 days ago	Mettler (C:\); Mettler (F:\)	12/10/2006	11:58 PM
30 days ago	Mettler (C:\); Mettler (F:\)	12/9/2006	11:58 PM
31 days ago	Mettler (C:\); Mettler (F:\)	12/8/2006	11:58 PM
31 days ago	Mettler (C:\); Mettler (F:\)	12/8/2006	2:07 AM
33 days ago	Mettler (C:\); Mettler (F:\)	12/6/2006	11:58 PM
34 days ago	Mettler (C:\); Mettler (F:\)	12/5/2006	11:58 PM
35 days ago	Mettler (C:\); Mettler (F:\)	12/4/2006	11:58 PM
36 days ago	Mettler (C:\); Mettler (F:\)	12/3/2006	11:58 PM
37 days ago	Mettler (C:\); Mettler (F:\)	12/2/2006	11:58 PM
38 days ago	Mettler (C:\); Mettler (F:\)	12/1/2006	11:58 PM
39 days ago	Mettler (C:\); Mettler (F:\)	11/30/2006	11:58 PM
40 days ago	Mettler (C:\); Mettler (F:\)	11/29/2006	11:59 PM
41 days ago	Mettler (C:\); Mettler (F:\)	11/28/2006	11:59 PM
42 days ago	Mettler (C:\); Mettler (F:\)	11/27/2006	11:58 PM
43 days ago	Mettler (C:\); Mettler (F:\)	11/26/2006	11:58 PM
44 days ago	Mettler (C:\); Mettler (F:\)	11/25/2006	11:58 PM

Browse Contents

Showing 59 of 59 available recovery points from default restore point history

Recovery Point Browser - Owner

File View Help

Recover Up Open Mount Dismount Properties Verify Archive

Name	Size	Type	Modified	Attributes
.java		File Folder	6/20/2006 4:25 PM	
.jpl_cache		File Folder	12/22/2002 5:25 PM	
Application Data		File Folder	12/6/2006 12:48 PM	RH
Cookies		File Folder	12/19/2006 11:46 PM	HS
Desktop		File Folder	12/16/2006 12:53 PM	
Favorites		File Folder	12/7/2006 9:31 AM	R
Local Settings		File Folder	11/20/2005 2:19 PM	H
My Documents		File Folder	12/8/2006 8:57 AM	R
My Private Folder		File Folder	10/31/2006 3:29 PM	R
NetHood		File Folder	12/19/2006 2:53 PM	H
PrintHood		File Folder	10/9/2001 12:40 PM	H
Recent		File Folder	12/19/2006 9:11 PM	RH
SendTo		File Folder	11/26/2006 9:36 PM	RH
Start Menu		File Folder	10/25/2006 9:07 AM	R
Templates		File Folder	3/31/2002 12:49 PM	H
UserData		File Folder	3/19/2002 7:13 AM	HS
Windows		File Folder	3/6/2002 9:48 PM	
plugin140_01.trace	4 KB	trace File	12/22/2002 5:39 PM	A
plugin141_02.trace	6 KB	trace File	7/16/2005 11:30 AM	A
decoup.out	0 KB	out File	3/16/2003 10:27 AM	A
default.pls	1 KB	pls File	7/14/2006 3:35 PM	A
ErrorLog.txt	0 KB	txt File	3/16/2003 10:34 AM	A
fo.out	0 KB	out File	3/16/2003 10:27 AM	A
gsview32.ini	8 KB	ini File	3/15/2006 11:56 AM	A
LuResult.txt	1 KB	txt File	1/8/2006 8:39 PM	A
MISNetMod.log	0 KB	log File	3/16/2003 10:34 AM	A
ntuser.dat	12,544 KB	dat File	12/18/2006 11:22 AM	A
ntuser.dat.LOG	1 KB	LOG File	12/19/2006 11:52 PM	HA
ntuser.ini	1 KB	ini File	12/18/2006 11:22 AM	HS
plugin131_02.trace	1 KB	trace File	9/17/2002 4:59 PM	A
Putty.rnd	1 KB	rnd File	3/25/2004 6:27 PM	A
RefEdit.exe	15 KB	exe File	4/14/2003 10:41 AM	A
reli.out	0 KB	out File	3/16/2003 10:27 AM	A
RUpdate.log	40 KB	log File	7/17/2006 7:58 AM	A

Taskbar: Norton Ghost, Recover My F..., Recovery Poi..., 5:32 PM

Recovery Point Browser - Sundancer Documents

File View Help

Recover Up Open Mount Dismount Properties Verify Archive

Name	Size	Type	Modified	Attributes
1-Prop. mgt. blank cover sheet 2.doc	21 KB	doc File	7/20/2004 11:00 AM	A
2-Page 2 mgt. contract.doc	22 KB	doc File	10/25/2004 7:08 AM	A
2004 MEETING MINUTES.doc	48 KB	doc File	11/30/2004 11:18 AM	A
2006 First Qtr Monthly Expenses.pdf	12 KB	pdf File	5/17/2006 7:44 AM	A
2006 First Qtr. Expense details.pdf	12 KB	pdf File	5/17/2006 8:45 AM	A
3-page 3 mgt. contract.doc	22 KB	doc File	9/26/2004 5:14 AM	A
4-Mgt. Signature sheet.doc	19 KB	doc File	7/19/2004 4:22 AM	A
Bay Islands Map.jpg	896 KB	jpg File	12/31/2005 9:40 PM	A
Computer Donation Declaration for Billing...	28 KB	doc File	4/16/2005 9:22 AM	A
Contract for Furnishing Labor and Mater...	709 KB	pdf File	12/13/2005 2:04 PM	A
Contract for Furnishing Labor and Mater...	27 KB	doc File	12/13/2005 12:56 PM	A
Contract for Furnishing Labor and Mater...	835 KB	pdf File	12/13/2005 12:58 PM	A
Fax of Deed to Roatan Municipal.doc	71 KB	doc File	3/7/2005 4:35 PM	A
HondurasRd.pdf	1,826 KB	pdf File	3/6/2005 12:17 PM	A
Joel James Dock Proposal Details.pdf	830 KB	pdf File	12/13/2005 12:41 PM	A
Larry Brumgardt Agreement for Sale.pdf	108 KB	pdf File	11/6/2005 4:54 PM	A
Larry Brumgardt Danzilo Billing.pdf	20 KB	pdf File	11/10/2005 2:45 PM	A
Larry Brumgardt Purchase Check.pdf	17 KB	pdf File	11/10/2005 2:45 PM	A
Larry Brumgardt Second Agreement for ...	83 KB	pdf File	11/10/2005 2:42 PM	A
Letter from Carl G. re dock, Miguel.rtf	7 KB	rtf File	11/19/2005 12:22 PM	A
Letter to Home Owners Jan 1, 2006.doc	30 KB	doc File	1/1/2006 8:32 AM	A
Memo to Sundancer BOD regarding Presi...	29 KB	doc File	6/13/2005 11:13 AM	A
News from the Sundancer Cabanas Hom...	33 KB	doc File	3/17/2005 7:36 PM	A
News from the Sundancer Cabanas Hom...	36 KB	doc File	7/8/2005 11:06 AM	A
News from the Sundancer Cabanas Hom...	31 KB	doc File	6/13/2005 10:50 AM	A
News from the Sundancer Cabanas Hom...	14 KB	wpd File	6/13/2005 10:53 AM	A
News from the Sundancer Cabanas Hom...	33 KB	doc File	3/17/2005 7:36 PM	A
OPERATION AND MAINTENANCE OF THE ...	47 KB	doc File	7/13/2005 1:45 PM	A
OPERATION AND MAINTENANCE OF THE ...	54 KB	mht File	7/11/2005 5:54 PM	A
Pages from Contract for Furnishing Labo...	223 KB	pdf File	12/13/2005 2:07 PM	A
Pages from Contract for Furnishing Labo...	491 KB	pdf File	12/13/2005 2:06 PM	A
Peter and Raymond Legal Docs.doc	29 KB	doc File	12/21/2005 9:43 PM	A
Pirana INSTALLATION GUIDELINES #5.doc	67 KB	doc File	7/13/2005 1:45 PM	A
POA for Sundancer to Gil Garcia.jpg	473 KB	jpg File	3/5/2004 7:30 AM	A
Property Manager Contract format.doc	31 KB	doc File	4/24/2005 1:51 PM	A
Property Manager Contract format.pdf	15 KB	pdf File	12/21/2005 12:55 PM	A
Property Manager Contract RLM Revisio...	31 KB	doc File	11/21/2005 4:02 PM	A
Property Manager Contract RLM Revisio...	15 KB	pdf File	11/21/2005 4:03 PM	A
Property Manager Job Description.doc	36 KB	doc File	11/22/2004 12:08 PM	A
Roatan check.jpg	13 KB	jpg File	11/10/2005 2:40 PM	A
Roatan document 1.jpg	15 KB	jpg File	11/10/2005 2:40 PM	A
Roatan document 2 001.jpg	22 KB	jpg File	11/10/2005 2:39 PM	A
Roatan document 2 002.jpg	19 KB	jpg File	11/10/2005 2:39 PM	A
Roatan document 2 003.jpg	22 KB	jpg File	11/10/2005 2:40 PM	A
Roatan document 2 004.jpg	7 KB	jpg File	11/10/2005 2:40 PM	A
Roatan Satellite Photo.jpg	51 KB	jpg File	3/6/2005 12:27 PM	A
Robert Original and Final contract.doc	47 KB	doc File	1/4/2005 12:09 PM	A

5:34 PM

File Name	Size	Type	Date Modified	Attributes
2000 First Ctr. Expense details.pdf	12 KB	pdf File	3/17/2005 8:43 AM	A
3-page 3 mgt. contract.doc	22 KB	doc File	9/26/2004 5:14 AM	A
4-Mgt. Signature sheet.doc	19 KB	doc File	7/19/2004 4:22 AM	A
Bay Islands Map.jpg	896 KB	jpg File	12/31/2005 9:40 PM	A
Computer Donation Declaration for Billing...	28 KB	doc File	4/16/2005 9:22 AM	A
Contract for Furnishing Labor and Mater...	709 KB	pdf File	12/13/2005 2:04 PM	A
Contract for Furnishing Labor and Mater...	27 KB	doc File	12/13/2005 12:56 PM	A
Contract for Furnishing Labor and Mater...	835 KB	pdf File	12/13/2005 12:58 PM	A
Fax of Deed to Roatan Municipal.doc	71 KB	doc File	3/7/2005 4:35 PM	A
HondurasRd.pdf	1,826 KB	pdf File	3/6/2005 12:17 PM	A
Joel James Dock Proc			12/13/2005 12:41 PM	A
Larry Brumgardt Ag			11/6/2005 4:54 PM	A
Larry Brumgardt Da			11/10/2005 2:45 PM	A
Larry Brumgardt Pui			11/10/2005 2:45 PM	A
Larry Brumgardt Sei			11/10/2005 2:42 PM	A
Letter from Carl G. I			11/19/2005 12:22 PM	A
Letter to Home Owr			1/1/2006 8:32 AM	A
Memo to Sundancer			6/13/2005 11:13 AM	A
News from the Sunc			3/17/2005 7:36 PM	A
News from the Sunc			7/8/2005 11:06 AM	A
News from the Sunc			6/13/2005 10:50 AM	A
News from the Sunc			6/13/2005 10:53 AM	A
News from the Sunc			3/17/2005 7:36 PM	A
OPERATION AND M			7/13/2005 1:45 PM	A
OPERATION AND M			7/11/2005 5:54 PM	A
Pages from Contrac			12/13/2005 2:07 PM	A
Pages from Contrac			12/13/2005 2:06 PM	A
Peter and Raymond			12/21/2005 9:43 PM	A
Pirana INSTALLATIC			7/13/2005 1:45 PM	A
POA for Sundancer to Gil Garcia.jpg	473 KB	jpg File	3/5/2004 7:30 AM	A
Property Manager Contract format.doc	31 KB	doc File	4/24/2005 1:51 PM	A
Property Manager Contract Format.pdf	15 KB	pdf File	12/21/2005 12:55 PM	A
Property Manager Contract RLM Revisio...	31 KB	doc File	11/21/2005 4:02 PM	A
Property Manager Contract RLM Revisio...	15 KB	pdf File	11/21/2005 4:03 PM	A
Property Manager Job Description.doc	36 KB	doc File	11/22/2004 12:08 PM	A
Roatan check.jpg	13 KB	jpg File	11/10/2005 2:40 PM	A
Roatan document 1 .ino	15 KB	ino File	11/10/2005 2:40 PM	A

**Recover Items** [X]

Source recovery point: Mettler

Items to Recover

- Contract for Furnishing Labor and Materials.doc

Recover to this folder:

ettings\Owner\My Documents\Sundancer Documents\