

CUGG Presentation by Ron Mettler
February 13, 2010

1. Picassa 3
 - a. Photo Transfer routine from memory card to computer.
 - b. Making new folders for photos.
 - c. Create consistent format for photo folders.
 - d. Take care to not delete photos from memory card before that are safely stored on hard drive.
 - e. Rotate and delete bad photos in temporary folder, then move them to new folders.

2. Google Chrome extensions that I use.
 - a. LastPass
 - b. Stumbleupon (My favorite extension)
 - c. Gmail Checker
 - d. Others of interest – Xmarks (Sync Bookmarks across computers and other browsers)
Google Voice – (Notifies you of new messages), Google Calendar Checker –
(Quickly see the time until your next meeting), 1- ClickWeather for Chrome – (One-
click to current weather).
 - e. Google Translate – (Translate entire Web page to a language of your choice)

3. Google Scholar
Scholarly articles can be found – Example searches; Macular Degeneration,
C Programming, Promissory Note, Mental Health.

4. Google Translate – Copy and paste text into Google translate and then specify language
to obtain a translation. Or upload a document from Word or even a PDF file.

5. Google calendar sync to iPhone/iPod Touch

Google Scholar has a special tool for searching scholarly literature called [Google Scholar](#). Find it on the Google site at www.google.com (click **More**, then locate Google Scholar), or go directly to <http://scholar.google.com>.



- **If you are on campus**, Google Scholar recognizes you by our Internet Protocol address. You will be able to link directly to many full text articles with no log-in required.
- Google Scholar will link directly to full text articles available through the Library's databases. Look for [Full-Text @ Clarion U](#) next to the search results.
- **If you are off campus**, you must [set your Google Scholar preferences](#) to the Clarion University Libraries.
>> Select "Scholar Preferences" from the link at the right of the search box, type Clarion in the Find Library box.

Library Links
([what's this?](#))

e.g., *Harvard*

Show library access links for (choose up to three libraries):

Clarion University of Pennsylvania Libraries - Full-Text @ Clarion U

- Save it as your preference.

- When you link to a full text article from off campus you will be presented with a log-in screen. Log in with your Campus Connect ID and password. The Article Linker menu (in the Library Ejournal Portal) presents a list of options for finding the item. You may be able to link directly to the full text.
- If full text is not available, one click searches the [Journal](#) to see if the journal is available in print.
- If the item is not available either electronically or in print, order it through Interlibrary Loan.
- Check to see if the journal is scholarly and/or refereed/peer-reviewed.
- [More Information from Google Scholar](#).

New! Nexus One[Hide](#)
[Learn more](#) | [Get your phone](#) | [Get help](#)
Mail, Calendar, & Contacts Setup: Setting Up Your iPhone or iPod Touch

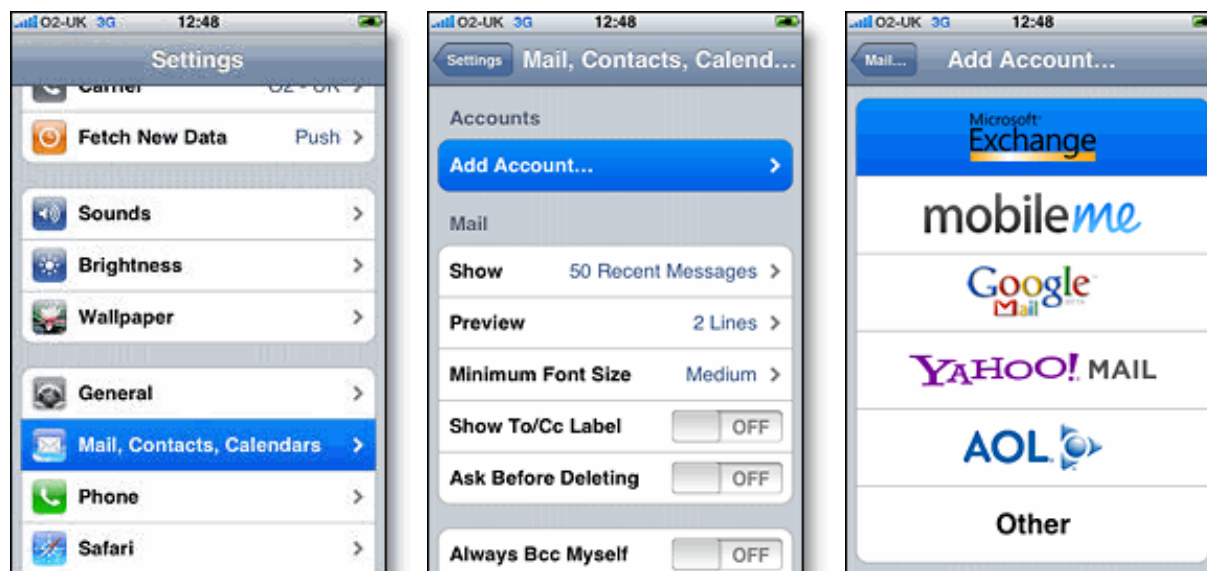
To set up Google Sync on your iPhone or iPod Touch device, please follow the steps below.

Requirements and Upload

1. Google Sync is only supported on iPhone OS versions 3.0 and above. You can check your current version by going to **Settings > General > About > Version**. To upgrade, follow the instructions at <http://www.apple.com/iphone/softwareupdate/>. Please upgrade to iPhone OS 3.0 before setting up Google Sync.
2. Perform a sync with iTunes to ensure that Contacts and Calendars from your iPhone are backed up to your computer. [Learn more](#).
3. If your business, school, or organization uses Google Apps, your administrator will first need to [enable Google Sync](#) before you can take advantage of this feature.

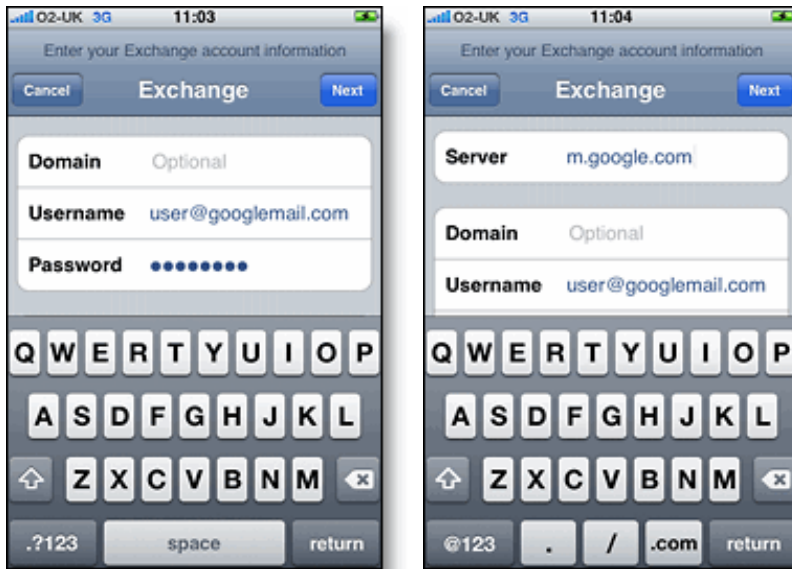
Getting Started

1. Open the **Settings** application on your device's home screen.
2. Open **Mail, Contacts, Calendars**.
3. Tap **Add Account...**
4. Select **Microsoft Exchange**.

**Enter Account Info**

5. In the **Email** field, enter your full Google Account email address. If you use an @gmail.com address, you may see an "Unable to verify certificate" warning when you proceed to the next step.
6. Leave the **Domain** field blank.
7. Enter your full Google Account email address as the **Username**.

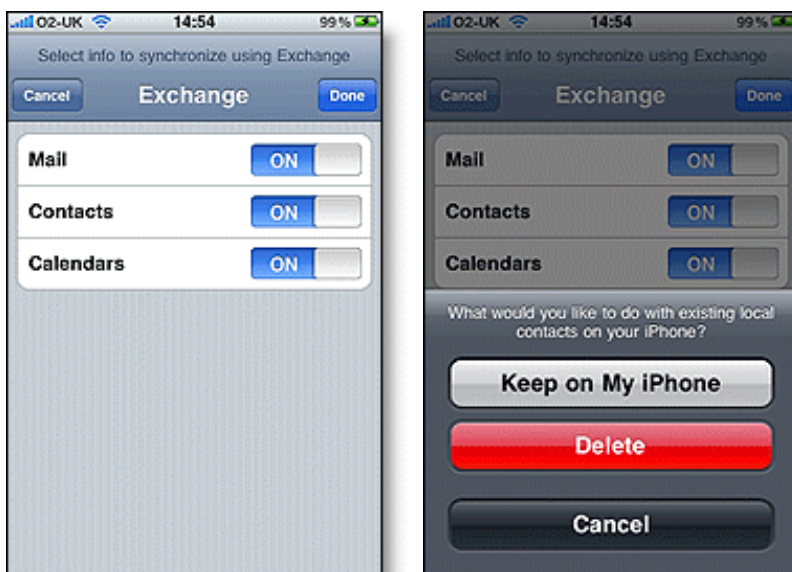
8. Enter your Google Account password as the **Password**.
9. Tap **Next** at the top of your screen.
- 9a. Choose **Accept** if the **Unable to Verify Certificate** dialog appears.
10. When the new **Server** field appears, enter **m.google.com**.
11. Press **Next** at the top of your screen again.



12. Select the Google services you want to sync.

13. Unless you want to delete all the existing Contacts and Calendars on your phone, select the **Keep on my iPhone** option when prompted. This will also allow you to keep syncing with your computer via iTunes.

If you want to sync only the **My Contacts** group, you must choose to **Delete Existing Contacts** during the Google Sync install when prompted. If you choose to keep existing contacts, it will sync the contents of the "All Contacts" group instead.



You've set up Google Sync for your iPhone. Synchronization will begin automatically if you have Push enabled on your phone. You can also open the Mail, Calendar or Contacts app and wait a few seconds to start a sync.

Next [choose which calendars to sync](#), if you'd like to enable multiple calendars.

Google maps
Find businesses, addresses and places of interest.

Search Maps Show search options

Get Directions My Maps

Go beyond the streets to [ski slopes](#), new in Street View.

[Set default location](#)

Put [your business on Google Maps](#)

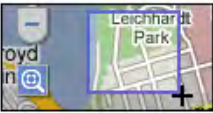


Print Send Link

Hudson Traffic More... Map Satellite Terrain Show labels

Google Maps Labs

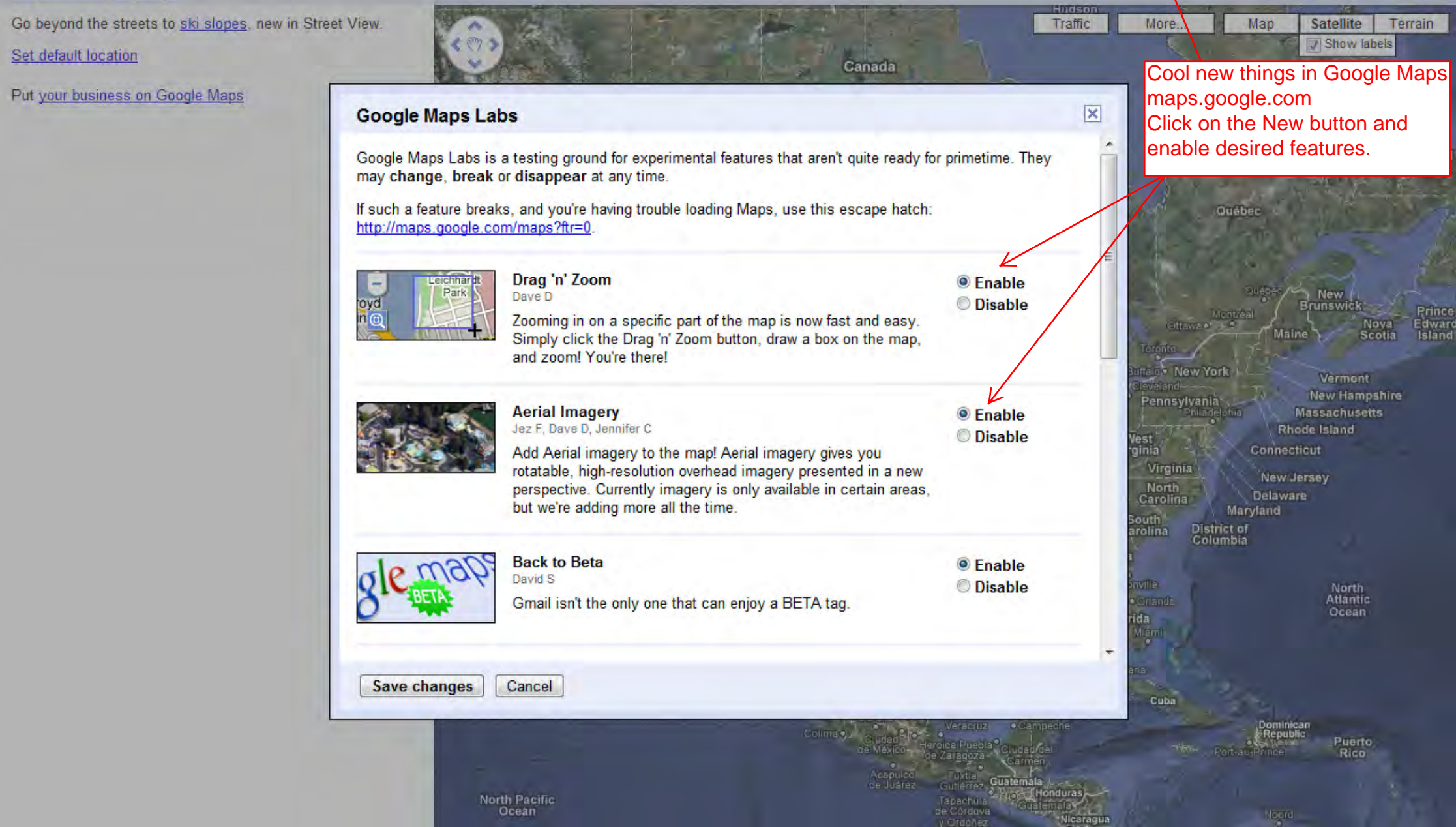
Google Maps Labs is a testing ground for experimental features that aren't quite ready for primetime. They may **change**, **break** or **disappear** at any time.

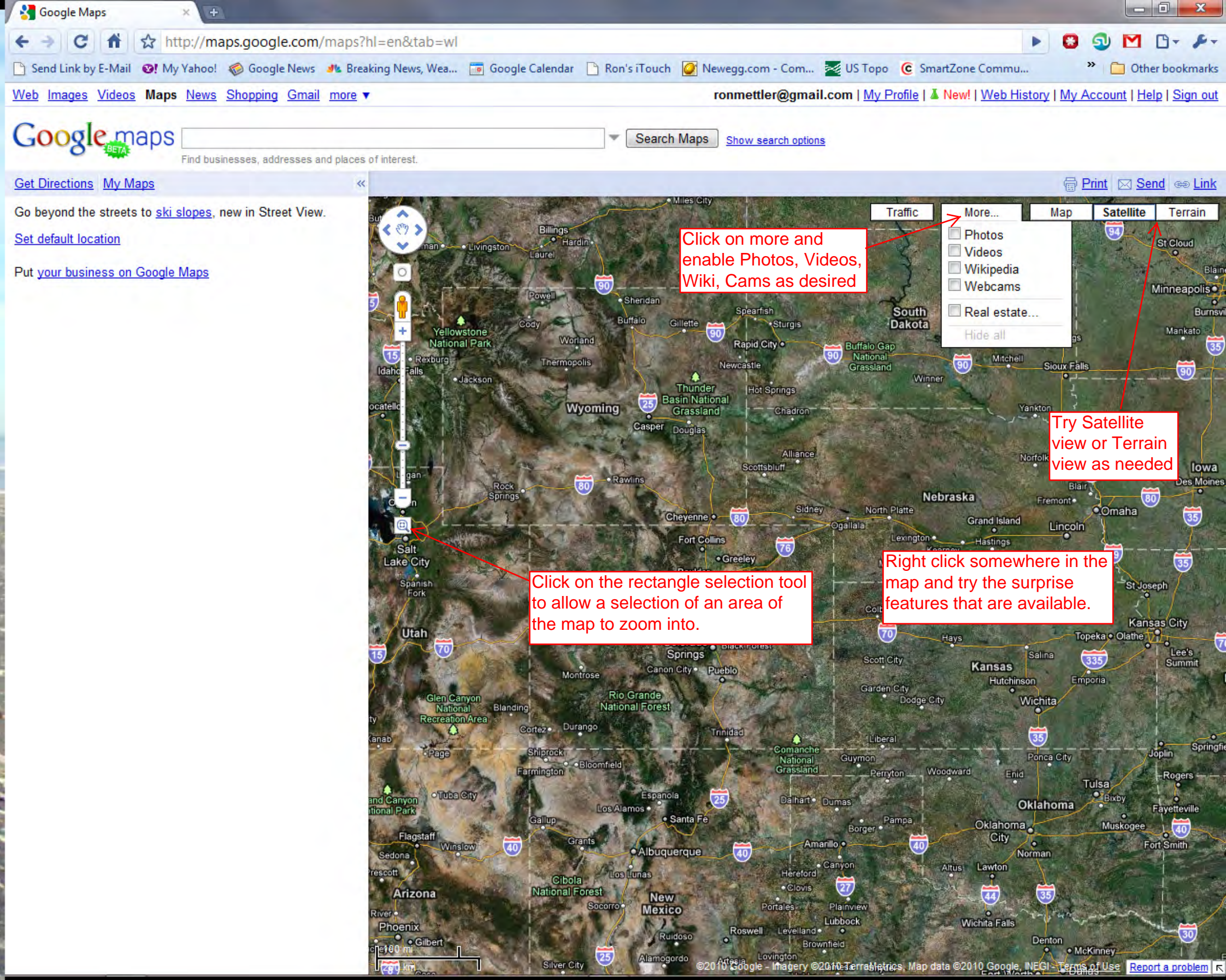
If such a feature breaks, and you're having trouble loading Maps, use this escape hatch:
<http://maps.google.com/maps?ft=0>

	Drag 'n' Zoom Dave D Zooming in on a specific part of the map is now fast and easy. Simply click the Drag 'n' Zoom button, draw a box on the map, and zoom! You're there!	<input checked="" type="radio"/> Enable <input type="radio"/> Disable
	Aerial Imagery Jez F, Dave D, Jennifer C Add Aerial imagery to the map! Aerial imagery gives you rotatable, high-resolution overhead imagery presented in a new perspective. Currently imagery is only available in certain areas, but we're adding more all the time.	<input checked="" type="radio"/> Enable <input type="radio"/> Disable
	Back to Beta David S Gmail isn't the only one that can enjoy a BETA tag.	<input checked="" type="radio"/> Enable <input type="radio"/> Disable

Save changes Cancel

Cool new things in Google Maps
maps.google.com
Click on the New button and
enable desired features.





Google maps

Find businesses, addresses and places of interest.

Search Maps Show search options

Get Directions My Maps

Go beyond the streets to [ski slopes](#), new in Street View.

[Set default location](#)

Put [your business on Google Maps](#)

Print Send Link

Traffic More... Map Satellite Terrain

Click on more and enable Photos, Videos, Wiki, Cams as desired

- Photos
- Videos
- Wikipedia
- Webcams
- Real estate...
- Hide all

Try Satellite view or Terrain view as needed

Click on the rectangle selection tool to allow a selection of an area of the map to zoom into.

Right click somewhere in the map and try the surprise features that are available.